



**SWSOFT™**

**PLESK™**

SWsoft

# Plesk Language Packs

**Localization Guide**

Plesk 8.1 for Windows



**SWSOFT™**

(c) 1999-2007

ISBN: N/A  
SWsoft.  
13755 Sunrise Valley Drive  
Suite 325  
Herndon  
VA 20171 USA  
Phone: +1 (703) 815 5670  
Fax: +1 (703) 815 5675

*Copyright 1999-2007 SWsoft. All rights reserved.  
Distribution of this work or derivative of this work in any form is prohibited unless prior written permission is obtained from the copyright holder.  
MS Windows, Windows 2003 Server, Windows XP, Windows 2000, Windows NT, Windows 98, and Windows 95 are registered trademarks of Microsoft Corporation.*

---

# Contents

|   |           |
|---|-----------|
| <b>Preface</b>                                    | <b>5</b>  |
| About This Guide.....                             | 5         |
| Who Should Read This Guide.....                   | 5         |
| Typographical Conventions.....                    | 6         |
| Feedback.....                                     | 6         |
| <b>Localization Overview</b>                      | <b>7</b>  |
| Locale Components.....                            | 9         |
| Language Pack Content.....                        | 10        |
| <b>Creating And Installing LP</b>                 | <b>11</b> |
| Preparing to Translation.....                     | 12        |
| Translating LP Files.....                         | 13        |
| Translating GUI And Contextual Help Messages..... | 14        |
| Translating Online Help.....                      | 18        |
| Compiling LP.....                                 | 20        |
| Installing LP.....                                | 20        |
| <b>Appendix. Locale Codes</b>                     | <b>21</b> |

## CHAPTER 1

# Preface

## In this chapter:

|                                 |   |
|---------------------------------|---|
| About This Guide.....           | 4 |
| Who Should Read This Guide..... | 4 |
| Typographical Conventions.....  | 5 |
| Feedback.....                   | 5 |

---

## About This Guide

This document is a guide to translating Plesk for Windows interface and online help to languages other than those released by SWsoft.

Chapter 2, **Localization Overview** gives an idea of localizing a software product, explains such terms used in the document as *locale* and *language pack*, and focuses on the localization capabilities of Plesk in detail.

Chapter 3, **Creating And Installing LP** provides guidelines, instructions and recommendations on creating a Plesk language pack and installing it to Plesk.

The Appendix **Locale Codes** lists names of the locales supported by Plesk.

---

## Who Should Read This Guide

This guide is intended for those willing to create custom language packs, i.e., to translate Plesk interface and online help to languages other than officially supported by SWsoft.

---

## Typographical Conventions

The following kinds of formatting in the text identify special information.

| Formatting convention | Type of Information   | Example  |
|-----------------------|---|--|
| Special Bold          | Items you must select, such as menu options, command buttons, or items in a list.   | Go to the <b>QoS</b> tab.  |
|                       | Titles of chapters, sections, and subsections.  | Read the <b>Basic Administration</b> chapter.                                      |
| <i>Italics</i>        | Used to emphasize the importance of a point, to introduce a term or to designate a command line placeholder, which is to be replaced with a real name or value. | The system supports the so called <i>wildcard character</i> search.                |
| Monospace             | The names of style sheet selectors, files and directories, and CSS fragments.   | The license file is located in the <code>httpdocs/common/license</code> directory. |
| Preformatted          | On-screen computer output in your command-line sessions; source code in XML, C++, or other programming languages.   | <pre># ls -al /files total 14470</pre>   |
| Preformatted Bold     | What you type, contrasted with on-screen computer output.   | <pre># cd /root/rpms/php</pre>   |

---

## Feedback

If you have found a mistake in this guide, or if you have suggestions or ideas on how to improve this guide, please send your feedback to [userdocs@swsoft.com](mailto:userdocs@swsoft.com). Please include in your report the guide's title, chapter and section titles, and the fragment of text in which you have found an error.

# Localization Overview

Since Plesk is a web application, a single instance may simultaneously target an international, multi-language audience owing to the possibility of *localization*. Localization means a process of adapting software for a particular country or region, which is, generally speaking, translating Plesk user's environment to a language spoken in the country or region.

A subset of Plesk user's environment adjusted to a particular language and culture is called *locale*. The **Locale Components** (see page 8) section answers what substitutes a Plesk locale.

On the implementation level, a particular locale is represented by the corresponding *language pack (LP)*. Language pack is an installable file containing all the resource files and processing instructions necessary for installing a particular locale to an existing Plesk instance. In other words, LP is a packed set of files containing all the language-related data that define the appearance of a particular user environment component. The **Language Pack Content** (see page 9) section focuses on what files are included to an LP, how the files must be structured, and shows how these files are related to locale components.

Plesk locale and language pack names follow the RFC 1766 standard in the format "<languagecode2>-<country/regioncode2>", where <languagecode2> is a lower-case two-letter code derived from ISO 639-1 and <country/regioncode2> is an upper-case two-letter code derived from ISO 3166. For example, U.S. English locale is named "en-US". To see a list of locale names supported by Plesk, refer to the Appendix "**Locale Codes** (see page 19)".

---

**Note:** This 4-letters format of Plesk locale and LP names is supported starting from Plesk 8.2. For information on previous Plesk versions, please visit the SWsoft forum devoted to localization discussions:  
<http://forum.swsoft.com/forumdisplay.php?s=dfb0a55333e42b791a9f11a560caf701&forumid=207>.

---

Plesk supports an arbitrary number of locales (depends on the purchased Plesk license). A particular locale can be represented by only one LP, that is, you cannot install to a Plesk, for example, two different en-US language packs.

By default, Plesk is shipped with only U.S. English language pack. SWsoft also releases LP's for eight additional languages, which are:

- 
- German (de-DE)
  - French (fr-FR)
  - Spanish (es-ES)
  - Italian (it-IT)
  - Russian (ru-RU)
  - Japanese (ja-JP)
  - Simplified Chinese (zh-CN)
  - Traditional Chinese (zh-TW)

These additional language packs for the latest Plesk version are available at the **Language Support** page of the SWsoft official Web Site. To obtain an additional LP for the previous Plesk versions, browse to **Previous Versions** in the left menu, select the required version and go to the corresponding **Language Support** page.

This Plesk Localization Kit is designed to allow third-party developers to create their own localizations for Plesk.

---

**Note:** To install and use additional LPs, be sure to have a Plesk license key allowing multi-language support with a required number of language packs.

---

## In this chapter:

|                            |   |
|----------------------------|---|
| Locale Components.....     | 8 |
| Language Pack Content..... | 9 |

# Locale Components

We distinguish the following three components in each Plesk locale:

- 1 *Interface Messages*. Include the following:
  - All textual elements of graphical user interface (except for the contextual help tips), namely, names of the buttons, icons, links, checkboxes, lists, options, list items, and so on
  - All alert, warning, error, progress and operation-result messages
- 2 *Contextual Help*. A set of context-dependent tips shown at the bottom of navigation pane. Contextual help messages say in brief either what the current Plesk page is designed for, or, if a mouse pointer is placed over a GUI control (button, icon, list heading, etc.), what the meaning of the control is.
- 3 *Online Help*. A Plesk user's guide which opens upon clicking **Help** in navigation pane and displays the content relevant to the current Plesk page.

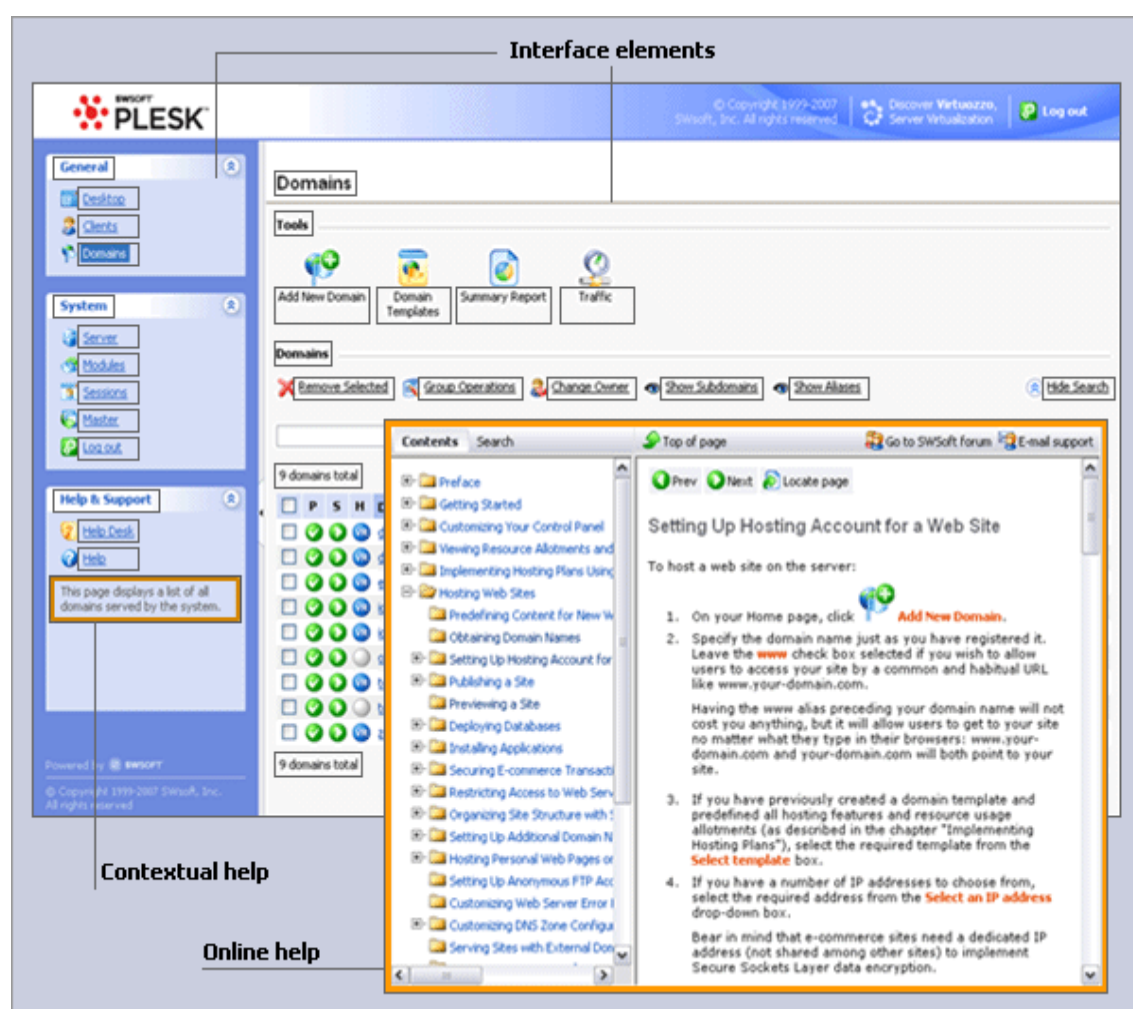














Figure 1: Plesk locale components

Each of the components is defined by a particular file or set of files within a language pack.

## Language Pack Content

All locale-defining files are specifically structured within a language pack, so that when the LP is being installed, the locale files are correctly built in the Plesk directories structure.

LP files and folders are structured as shown below (`plib/` and `htdocs/` directories are located at the LP root).

|   |                           |  |
|---|---------------------------|--|
|    | <code>plib/</code>        | serves as a container for the lower-level directory  |
|    | <code>locale/</code>      | the files defining GUI messages and contextual help  |
|    | <code>conhelp.php</code>  | contains strings that define contextual help tips: What contextual help text is shown when a mouse points at a particular page control |
|    | <code>messages.php</code> | contains strings that define interface messages: What interface message is shown at what Plesk interface location                      |
|    | <code>htdocs/</code>      | serves as a container for the lower-level directory  |
|    | <code>locale/</code>      | serves as a container for the lower-level directory  |
|    | <code>lang/</code>        | serves as a container for htm/html files defining a particular locale  |
|   | <code>license.html</code> | contains the text of SWsoft. End-User License Agreement shown to Plesk Administrator at his first login to the control panel           |
|  | <code>help/</code>        | contains files composing online help addressed to Plesk Administrator; serves as a container for lower-level directories               |
|  | <code>cl/</code>          | contains files composing online help addressed to Plesk Client   |
|  | <code>dl_usr/</code>      | contains files composing online help addressed to Plesk Domain Administrator   |
|  | <code>ml_usr/</code>      | contains files composing online help addressed to Plesk Mail User  |

For the detailed information on files composing online help, refer to the [Translating Online Help](#) (see page 17) section.

# Creating And Installing LP

In brief, to create a language pack, you should do the following:

- 1 Prepare the default - en-US - language pack sources
- 2 Translate the LP source files content to a required language
- 3 Compile your resulting files to a new language pack

The current Localization Kit contains an installation file of the **LP Edit** tool which compiles your translated files to an LP on the final step and makes the steps of getting the LP sources and translating them to a required language more comfortable.

The following sub-sections describe in detail each step of creating an LP.

## In this chapter:

|                               |    |
|-------------------------------|----|
| Preparing to Translation..... | 11 |
| Translating LP Files.....     | 12 |
| Compiling LP.....             | 19 |
| Installing LP.....            | 19 |

---

## Preparing to Translation

This step requires that you install the **LP Edit** tool and start a new language pack project in it.

➤ **To install LP Edit:**

- 1 Run the `lpsdk.msi` installation package downloaded with this Localization Kit, and follow the Installation Wizard instructions.

LP Edit is installed to the following location: `C:\Program Files\Swwsoft\Plesk LP SDK\`.

➤ **To start a new LP project:**

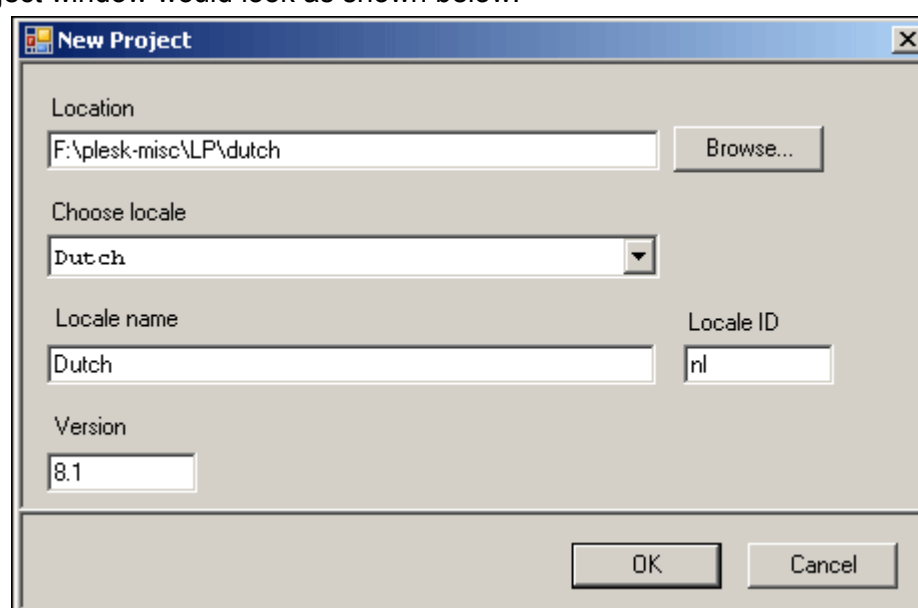
- 1 Run `LPEdit.exe` located at `C:\Program Files\Swwsoft\Plesk LP SDK\`.
- 2 Select **New** in the **File** menu.
- 3 Specify the LP project properties:
  - browse for a directory where your project files must be located
  - select a locale for which the LP is created from the **Choose locale** menu
  - specify the Plesk version for which the LP is created

---

**Note:** By default, **LP Edit** creates an LP project with LP sources of the latest Plesk version. If you are making an LP for the older versions, change the value in the **Version** text box.

---

For example, if creating the project for Dutch LP for Plesk 8.1.x for Windows, a New Project window would look as shown below.



- 4 Click **OK**.

---

Your LP project is created, and you can start translating the en-US LP to a required language. On the level of file system, the project is located in the folder you specified, and consists of LP Edit accessory files and folders, and source files (for details, refer to the Language Pack Content (see page 9) section) of the en-US language pack for the latest Plesk for Windows version.

### Using Alternative LP Sources

When you create a new project in LP Edit, LP sources of the latest Plesk version are used. If you are making an LP for an older Plesk version, you should do the following:

- 1 Take LP sources from a Plesk instance of the required version.

The files and folders you need are

1. %plesk-dir%\admin\htdocs\locale\en\  
2. %plesk-dir%\admin\plib\locale\conhelp\_en.php3  
3. %plesk-dir%\admin\plib\locale\messages\_en.php3

where %plesk-dir% is a Plesk installation directory.

- 2 Integrate the LP files you obtained with your project basing on the LP structure rules (see page 9). To do so, copy your LP sources to the project directories, renaming them properly if you have taken them from a Plesk instance.

---

## Translating LP Files

Once you created your LP project, the next step is to actually modify interface and contextual help messages, and online help texts.

Generally speaking, you have two options when creating your language pack:

- creating a "partial" LP that localizes only the GUI part of the Plesk user's environment (which excludes online help system)
- creating a complete LP that localizes the whole Plesk user's environment (which includes online help system)

The following sub-sections explain how the LP source files are organized, and provide recommendations that can be useful when translating the files.

## Translating GUI And Contextual Help Messages

### Files Structure

Files `messages.php` and `conhelp.php` have a simple structure presenting an associative array made up of records like

```
'<localization_key>' => '<message>'
```

where

- `<localization_key>` uniquely identifies a Plesk GUI item
- `<message>` is a text in a human language which describes a particular Plesk GUI item, appearing as either a GUI or a contextual help text

To adjust these files so that the Plesk GUI was displayed to users in a particular language, translate all string parts containing messages (`<message>`), leaving localization keys as they are.

**Important:** Do not translate any of the localization keys. Plesk uses localization keys to link a particular GUI item with the corresponding message, so if you change a key in an LP file, the original key will be displayed in Plesk instead of the corresponding message.

### Translation Tips

LP Edit provides its own interface for translating GUI and Contextual Help messages which prevents corrupting the interface messages array. If you use LP Edit for translating interface messages, you just translate the content of the right column.

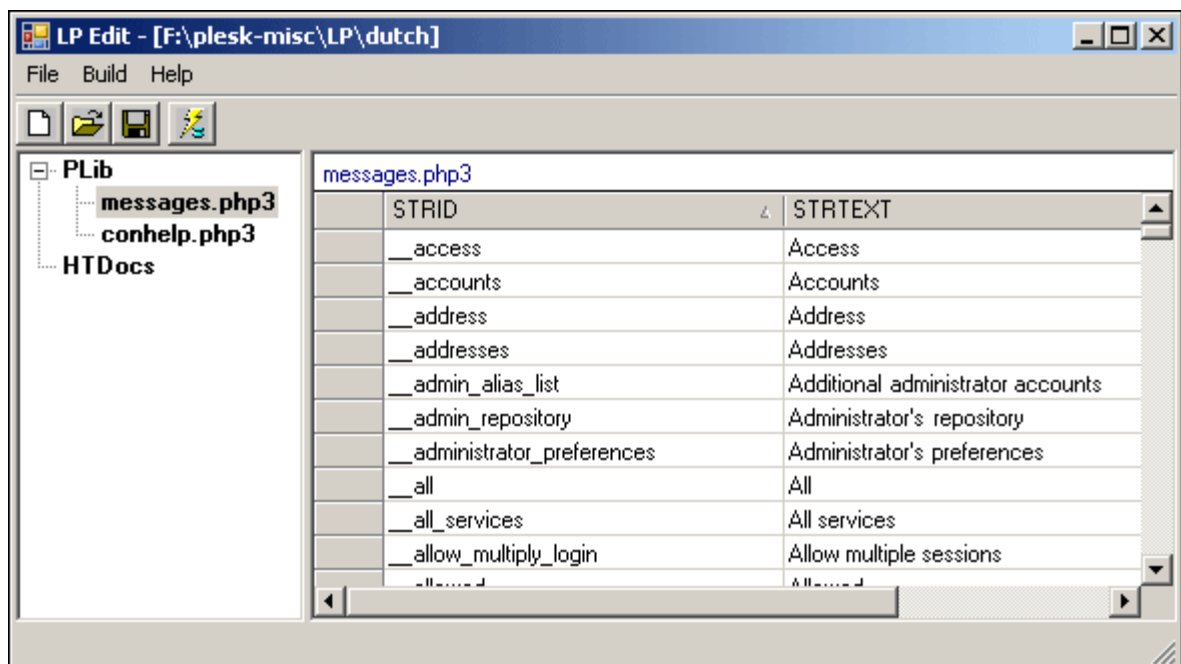


Figure 2: LP Edit Project

However, you can use your favorite text editor for translating these locale-defining PHP files. If you choose this option, keep in mind the following:

- 1 The editor must support working with texts in UTF-8.
- 2 We recommend using a text editor which supports highlighting syntax. Using such editors not only makes the translating more comfortable than when using those displaying just plain text, but also, what's more important, helps you detect the file corruption if you change the array syntax.
- 3 Do not change the files encoding, it must be UTF-8. Otherwise, the messages you've translated may be displayed incorrectly.

There is a number of recommendations that might be useful when translating these files, specifically, concerning message variables, HTML entities, and special characters, and PHP array syntax (important if translating not in LP Edit).

## Variables

The following types of variables are used:

- 1 `$PROD_NAME` - replaces the nomination of the Plesk instance.

For example, if we have Plesk 8.2 for Windows installed, and the file `messages_en-US.php` contains the string

```
'license__you_should_accept' => "In order to use $PROD_NAME  
you should agree to the terms of this license.",
```

the corresponding message in the Plesk GUI looks as **In order to use Plesk 8.2 for Windows you should agree to the terms of this license.**

- 2 `'.PRODUCT_ROOT.'` - replaces the nomination of a directory where Plesk is installed. The default installation directory is `C:\Program files\SWsoft\Plesk\`.

For example, if Plesk is installed to the default location, and the file `messages_en-US.php` contains the string

```
'get_password__admin_password' => 'The administrator\'s  
password cannot be sent by e-mail for security reasons. You  
can use the plesksrvclient.exe utility located in  
' .PRODUCT_ROOT.'admin\bin to set up a new password.',
```

the corresponding message in the Plesk GUI looks as **The administrator's password cannot be sent by e-mail for security reasons. You can use the plesksrvclient.exe utility located in C:\Program files\SWsoft\Plesk\admin\bin to set up a new password..**

- 3 %%<variable-name>%% - variables of this type are used in messages .php files to denote various information regarding Plesk license.

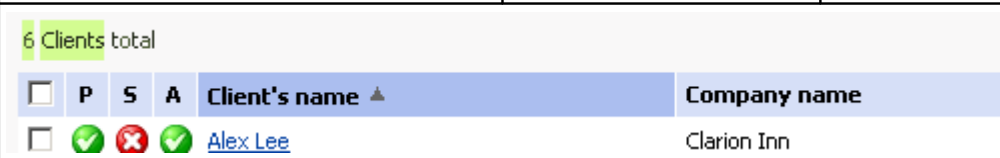



For example, if the Plesk license key update date is 1 October, 2007, and the license managing server is ka.swsoft.com, and the file messages\_en-US.php contains the string

```
'key__license_update_date_hint' => 'The expiration date will be automatically extended when reaching %%license_update_date%%. For the automatic update you must allow connections to %%keyserver_host%%. For more information, refer to the %%help begin:lim_date%%following help topic%%help end:lim_date%%.'
```

then the corresponding message in Plesk GUI looks as **The expiration date will be automatically extended when reaching Oct 1, 2007. For the automatic update you must allow connections to ka.swsoft.com. For more information, refer to the following help topic.**

- 4 %1, %2, etc. - this type is used only in messages .php files. Such variables may replace almost everything: titles of Plesk objects (Domain, Client, IP, etc.), domain, client and other Plesk objects names, error messages, and so on, – in each string, the meaning of a particular variable of such type depends on the context. The variable value is dynamically set by Plesk when it displays the message in its GUI.

The table below gives an idea of how to understand messages with these variables.

| String   | Variable Meaning   | Message Examples   |
|--|--|--|
| 'clist__info' => '%4 %1 total',  | %4 - the number of items in a list                                 | 100 Domains total  |
|  | %1 - the Plesk object  | 30 Clients total   |
|  |  | 2 Databases total  |
|                                      |  |  |
| '__client_with_login_name_already_exists' => "Client with login name \"%1\" already exists.",                            | %1 - Plesk client login  | Client with login name "johndoe" already exists.                                   |
|  |  |  |
| '__domain_resolves_to_another_ip' => "The domain resolves to another IP address (%1). Please correct DNS settings.",     | %1 - IP address to which a domain resolves                         | The domain resolves to another IP address (10.0.0.4). Please correct DNS settings. |
|                                      |  |  |
| '__unable_update_cl_data' => "Unable to update client data: %1",   | %1 - A phrase stating why updating a client account is impossible. | Unable to update client data: Client with login name "johndoe" exists.             |
|  |  |  |

## HTML Entities; Special Characters

Do not translate

- HTML entities  
for example, `&lt;`, `&gt;`; used for defining "<" and ">" symbols
- special characters  
for example, `\n` used for defining a new line

## Array syntax

# It is important that commas at the end of each string were left where they are. Otherwise, the PHP array will be corrupt and, when using such language pack, Plesk GUI will display pure localization keys instead of the correct messages.

# What else can corrupt the array is mistakes in using quotes. To avoid such mistakes, follow the rules below.

1. If a message text does not contain any quotes, enclose the text with either single or double quotes.

2. If a message text contains at least one single quote or apostrophe:

- precede each quote with backslash:

```
'b_add_ip_for_clients' => 'Add IP address to client\'s pools.',
```

or

- enclose the message with double quotes:

```
'b_add_ip_for_clients' => "Add IP address to client's pools.",
```

3. If a message text contains at least one double quote:

- precede each quote with backslash:

```
'odbc__mysql_option' => "Options that specify how MyODBC should work. See <a href=\"http://dev.mysql.com/doc/mysql/en/Connection_parameters.html\">http://dev.mysql.com/doc/mysql/en/Connection_parameters.html</a>",
```

or

- enclose the message with single quotes:

```
'odbc__mysql_option' => 'Options that specify how MyODBC should work. See <a href="http://dev.mysql.com/doc/mysql/en/Connection_parameters.html">http://dev.mysql.com/doc/mysql/en/Connection_parameters.html</a>',
```

# Translating Online Help

## Files Structure

Online help is presented by 4 sets of files, each designed for displaying to a particular Plesk user and located at a specific folder within LP:

- Administrator (`htdocs/locale/lang/help/`)
- Client (`htdocs/locale/lang/help/cl/`)
- Domain Administrator (`htdocs/locale/lang/help/dl_usr/`)
- Mail User (`htdocs/locale/lang/help/ml_usr/`)

4 different online help systems exist due to the difference in Plesk functionality available to each type of Plesk users. In spite of this difference in content, the online help systems are the same in the view of their implementation: All of them are Plesk User's guides compiled of the specific files building particular structural elements of the guides.

To translate an online help system, you should modify the following files:

### 1 numerous \*.htm files:

4. `<number>.htm` (e.g., `33243.htm`)

pages containing the online help contents, displayed in the main (content) frame of the online help window

5. `toc.htm`, `toc<number>.htm` (e.g., `toc246135.htm`)

pages containing different states of the Contents tree, displayed in the left frame of the online help window

### 2 \*.gif files:

`contents*.gif`, `search*.gif`

buttons used for switching between the **Contents** and the **Search** tabs in the navigation frame

### 3 `dhtml_search.js`

java script implementing the mechanism of search through the guide

This figure shows the structural elements of the online help system defined by the files listed above.

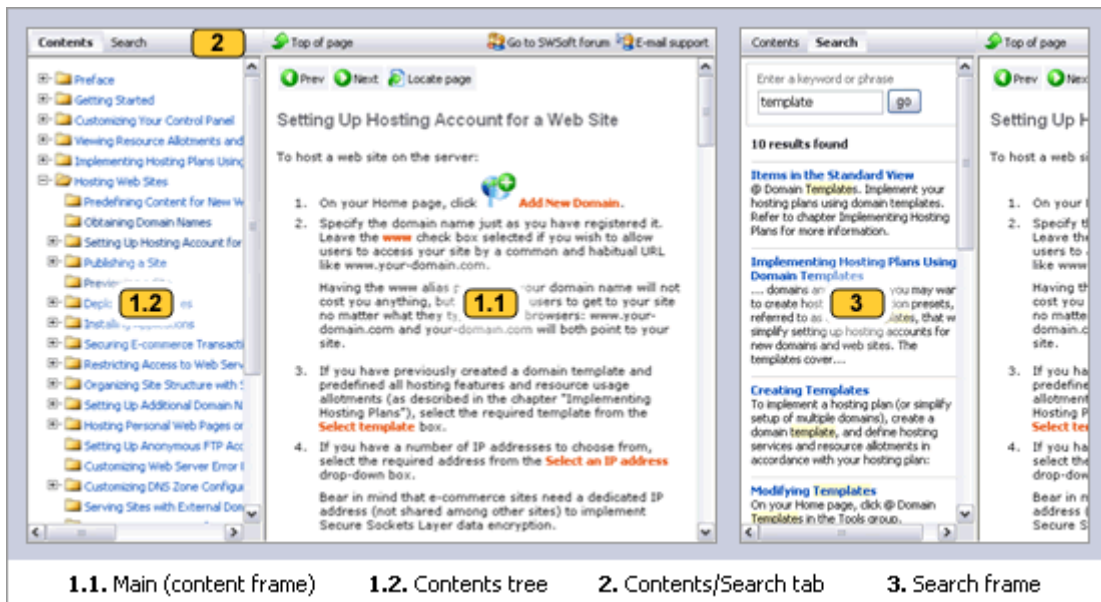


Figure 3: Online help structural elements

## Translation Tips

The current version of LP Edit does not have an interface designed for translating Online Help. For editing the files that build Plesk help system, we recommend using a WYSIWYG HTML editor which supports working with files in UTF-8. Using such editor makes the process of translation more comfortable because it

- lets you concentrate on modifying the help content without the necessity of separating it from the HTML syntax;
- prevents you from modifying anything besides the help content, which guarantees that the files will not be corrupted somehow.

**Important:** Do not change the files encoding: It must be UTF-8. Otherwise, the texts you translated may be displayed incorrectly.

---

## Compiling LP

Once you have translated the locale-defining files to a required language, you are ready to compile them to a language pack, which will be easily installed to Plesk afterwards.

➤ *To compile an LP:*

- 1 In LP Edit, open the language pack project by selecting **Open...** in the **File** menu and then browsing to the project folder.

If you translated LP files taken from **SWsoft Developer Network** or Plesk instance, and didn't use LP Edit for this, you will need to install LP Edit, start a new LP project and integrate your translated LP files with the project before building your LP. For information on how to do this, refer to the section *Preparing to Translation* (see page 11).

- 2 Click **Build**.

LP Edit compiles a language pack from the project and creates in the project directory the `release/` folder containing an installable language pack with the name in format `Plesk_<major-version.minor-version>_LanguagePack_<YYMMDD.HH>_<locale>.msi`, where `<YYMMDD.HH>` indicates the timestamp for the LP creation.

For our example with Dutch LP for Plesk 8.1.1, the resulting Dutch LP gets the name `Plesk_8.1_LanguagePack_070206.14_nl-NL.msi`.

---

## Installing LP

➤ *To install an LP to Plesk:*

- 1 Upload the LP self-installing file to the server with Plesk (the upload directory is not important).
- 2 Run the file and follow the Installation Wizard instructions.

After Windows Installer finishes installing the language pack, this LP can be used in Plesk. It appears automatically in the list of installed language packs (**Server > Interface Management > Locales**) and becomes available for choosing in all **Interface Preferences** forms.

## Appendix. Locale Codes

| <b>Language - Country/Region</b> | <b>Code</b> | <b>Language - Country/Region</b>                   | <b>Code</b> |
|----------------------------------|-------------|--|-------------|
| <b>Afrikaans</b>                 | <b>af</b>   | <b>Icelandic</b>                                   | <b>is</b>   |
| Afrikaans - South Africa         | af-ZA       | Icelandic - Iceland                                | is-IS       |
| <b>Albanian</b>                  | <b>sq</b>   | <b>Indonesian</b>                                  | <b>id</b>   |
| Albanian - Albania               | sq-AL       | Indonesian - Indonesia                             | id-ID       |
| <b>Arabic</b>                    | <b>ar</b>   | <b>Italian</b>                                     | <b>it</b>   |
| Arabic - Algeria                 | ar-DZ       | Italian - Italy                                    | it-IT       |
| Arabic – Bahrain                 | ar-BH       | Italian - Switzerland                              | it-CH       |
| Arabic – Egypt                   | ar-EG       | <b>Japanese</b>                                    | <b>ja</b>   |
| Arabic – Iraq                    | ar-IQ       | Japanese - Japan                                   | ja-JP       |
| Arabic – Jordan                  | ar-JO       | <b>Kannada</b>                                     | <b>kn</b>   |
| Arabic – Kuwait                  | ar-KW       | Kannada - India                                    | kn-IN       |
| Arabic – Lebanon                 | ar-LB       | <b>Kazakh</b>                                      | <b>kk</b>   |
| Arabic – Libya                   | ar-LY       | Kazakh - Kazakhstan                                | kk-KZ       |
| Arabic - Morocco                 | ar-MA       | <b>Korean</b>                                      | <b>ko</b>   |
| Arabic - Oman                    | ar-OM       | Korean - Korea                                     | ko-KR       |
| Arabic - Qatar                   | ar-QA       | <b>Kyrgyz</b>                                      | <b>ky</b>   |
| Arabic - Saudi Arabia            | ar-SA       | Kyrgyz - Kyrgyzstan                                | ky-KG       |
| Arabic - Syria                   | ar-SY       | <b>Latvian</b>                                     | <b>lv</b>   |
| Arabic - Tunisia                 | ar-TN       | Latvian - Latvia                                   | lv-LV       |
| Arabic - United Arab Emirates    | ar-AE       | <b>Lithuanian</b>                                  | <b>lt</b>   |
| Arabic - Yemen                   | ar-YE       | Lithuanian - Lithuania                             | lt-LT       |
| <b>Armenian</b>                  | <b>hy</b>   | <b>Macedonian</b>                                  | <b>mk</b>   |
| Armenian - Armenia               | hy-AM       | Macedonian - Former Yugoslav Republic of Macedonia | mk-MK       |
| <b>Azeri</b>                     | <b>az</b>   | <b>Malay</b>                                       | <b>ms</b>   |
| Azeri - Azerbaijan               | az-AZ       | Malay - Brunei                                     | ms-BN       |
| <b>Basque</b>                    | <b>eu</b>   | Malay - Malaysia                                   | ms-MY       |
| Basque - Basque                  | eu-ES       | <b>Marathi</b>                                     | <b>mr</b>   |
| <b>Belarusian</b>                | <b>be</b>   | Marathi - India                                    | mr-IN       |
| Belarusian - Belarus             | be-BY       | <b>Mongolian</b>                                   | <b>mn</b>   |
| <b>Bulgarian</b>                 | <b>bg</b>   | Mongolian - Mongolia                               | mn-MN       |
| Bulgarian - Bulgaria             | bg-BG       | <b>Norwegian</b>                                   | <b>no</b>   |
| <b>Catalan</b>                   | <b>ca</b>   | Norwegian (Bokmål) - Norway                        | nb-NO       |
| Catalan - Spain                  | ca-ES       | Norwegian (Nynorsk) - Norway                       | nn-NO       |
| <b>Chinese</b>                   | <b>zh</b>   | <b>Polish</b>                                      | <b>pl</b>   |
| Chinese - Hong Kong SAR          | zh-HK       | Polish - Poland                                    | pl-PL       |
| Chinese - Macao SAR              | zh-MO       | <b>Portuguese</b>                                  | <b>pt</b>   |

| <b>Language - Country/Region</b>       | <b>Code</b> | <b>Language - Country/Region</b> | <b>Code</b> |
|--|-------------|----------------------------------|-------------|
| Chinese - China (Simplified Chinese)   | zh-CN       | Portuguese - Brazil              | pt-BR       |
| Chinese - Singapore                    | zh-SG       | Portuguese - Portugal            | pt-PT       |
| Chinese - Taiwan (Traditional Chinese) | zh-TW       | <b>Punjabi</b>                   | <b>pa</b>   |
| <b>Croatian</b>                        | <b>hr</b>   | Punjabi - India                  | pa-IN       |
| Croatian - Croatia                     | hr-HR       | <b>Romanian</b>                  | <b>ro</b>   |
| <b>Czech</b>                           | <b>cs</b>   | Romanian - Romania               | ro-RO       |
| Czech - Czech Republic                 | cs-CZ       | <b>Russian</b>                   | <b>ru</b>   |
| <b>Danish</b>                          | <b>da</b>   | Russian - Russia                 | ru-RU       |
| Danish - Denmark                       | da-DK       | <b>Sanskrit</b>                  | <b>sa</b>   |
| <b>Dutch</b>                           | <b>nl</b>   | Sanskrit - India                 | sa-IN       |
| Dutch - Belgium                        | nl-BE       | <b>Serbian</b>                   | <b>sr</b>   |
| Dutch - The Netherlands                | nl-NL       | Serbian - Serbia                 | sr-SP       |
| <b>English</b>                         | <b>en</b>   | <b>Slovak</b>                    | <b>sk</b>   |
| English - Australia                    | en-AU       | Slovak - Slovakia                | sk-SK       |
| English - Belize                       | en-BZ       | <b>Slovenian</b>                 | <b>sl</b>   |
| English - Canada                       | en-CA       | Slovenian - Slovenia             | sl-SI       |
| English - Caribbean                    | en-CB       | <b>Spanish</b>                   | <b>es</b>   |
| English - Ireland                      | en-IE       | Spanish - Argentina              | es-AR       |
| English - Jamaica                      | en-JM       | Spanish - Bolivia                | es-BO       |
| English - New Zealand                  | en-NZ       | Spanish - Chile                  | es-CL       |
| English - Philippines                  | en-PH       | Spanish - Colombia               | es-CO       |
| English - South Africa                 | en-ZA       | Spanish - Costa Rica             | es-CR       |
| English - Trinidad and Tobago          | en-TT       | Spanish - Dominican Republic     | es-DO       |
| English - United Kingdom               | en-GB       | Spanish - Ecuador                | es-EC       |
| English - United States                | en-US       | Spanish - El Salvador            | es-SV       |
| English - Zimbabwe                     | en-ZW       | Spanish - Guatemala              | es-GT       |
| <b>Estonian</b>                        | <b>et</b>   | Spanish - Honduras               | es-HN       |
| Estonian - Estonia                     | et-EE       | Spanish - Mexico                 | es-MX       |
| <b>Faroese</b>                         | <b>fo</b>   | Spanish - Nicaragua              | es-NI       |
| Faroese - Faroe Islands                | fo-FO       | Spanish - Panama                 | es-PA       |
| <b>Farsi</b>                           | <b>fa</b>   | Spanish - Paraguay               | es-PY       |
| Farsi - Iran                           | fa-IR       | Spanish - Peru                   | es-PE       |
| <b>Finnish</b>                         | <b>fi</b>   | Spanish - Puerto Rico            | es-PR       |
| Finnish - Finland                      | fi-FI       | Spanish - Spain                  | es-ES       |
| <b>French</b>                          | <b>fr</b>   | Spanish - Uruguay                | es-UY       |
| French - Belgium                       | fr-BE       | Spanish - Venezuela              | es-VE       |

| <b>Language - Country/Region</b> | <b>Code</b> | <b>Language - Country/Region</b> | <b>Code</b> |
|----------------------------------|-------------|----------------------------------|-------------|
| French - Canada                  | fr-CA       | Swahili                          | sw          |
| French - France                  | fr-FR       | Swahili - Kenya                  | sw-KE       |
| French - Luxembourg              | fr-LU       | Swedish                          | sv          |
| French - Monaco                  | fr-MC       | Swedish - Finland                | sv-FI       |
| French - Switzerland             | fr-CH       | Swedish - Sweden                 | sv-SE       |
| <b>Galician</b>                  | <b>gl</b>   | <b>Tamil</b>                     | <b>ta</b>   |
| Galician - Galician              | gl-ES       | Tamil - India                    | ta-IN       |
| <b>Georgian</b>                  | <b>ka</b>   | <b>Tatar</b>                     | <b>tt</b>   |
| Georgian - Georgia               | ka-GE       | Tatar - Russia                   | tt-RU       |
| <b>German</b>                    | <b>de</b>   | <b>Telugu</b>                    | <b>te</b>   |
| German - Austria                 | de-AT       | Telugu - India                   | te-IN       |
| German - Germany                 | de-DE       | Thai                             | th          |
| German - Liechtenstein           | de-LI       | Thai - Thailand                  | th-TH       |
| German - Luxembourg              | de-LU       | Turkish                          | tr          |
| German - Switzerland             | de-CH       | Turkish - Turkey                 | tr-TR       |
| <b>Greek</b>                     | <b>el</b>   | <b>Ukrainian</b>                 | <b>uk</b>   |
| Greek - Greece                   | el-GR       | Ukrainian - Ukraine              | uk-UA       |
| <b>Gujarati</b>                  | <b>gu</b>   | <b>Urdu</b>                      | <b>ur</b>   |
| Gujarati - India                 | gu-IN       | Urdu - Pakistan                  | ur-PK       |
| <b>Hebrew</b>                    | <b>he</b>   | <b>Uzbek</b>                     | <b>uz</b>   |
| Hebrew - Israel                  | he-IL       | Uzbek - Uzbekistan               | uz-UZ       |
| <b>Hindi</b>                     | <b>hi</b>   | <b>Vietnamese</b>                | <b>vi</b>   |
| Hindi - India                    | hi-IN       | Vietnamese - Vietnam             | vi-VN       |
| <b>Hungarian</b>                 | <b>hu</b>   |                                  |             |
| Hungarian - Hungary              | hu-HU       |                                  |             |